

PROPOSED RESIDENTIAL SUBDIVISION (23 LOTS) WILLIAM STREET, CAMBOOYA FOR STYLCO PTY LTD

DRAWING LIST

ROADWORKS

- 104000/101 Rev B SETOUT PLAN
- 104000/102 Rev B LAYOUT PLAN
- 104000/103 Rev B TYPICAL CROSS SECTIONS & KERB DETAILS
- 104000/201 Rev B ROAD LONGITUDINAL SECTION - CONTROL LINE 2 (ROAD 1)
- 104000/202 Rev B CROSS SECTIONS - CONTROL LINE 2 (ROAD 1)
- 104000/203 Rev B INTERSECTION DETAILS - SHEET 1
- 104000/204 Rev B INTERSECTION DETAILS - SHEET 2
- 104000/205 Rev B CUL-DE-SAC DETAILS
- 104000/206 Rev B BULK EARTHWORKS LAYOUT

STORMWATER

- 104000/301 Rev B STORMWATER LAYOUT PLAN
- 104000/302 Rev B STORMWATER DRAINAGE LONGITUDINAL SECTION & DETAILS
- 104000/303 Rev B DRAINAGE CHANNEL CULVERT SETOUT
- 104000/304 Rev B DRAINAGE CHANNEL TYPE CROSS SECTION
- 104000/305 Rev B STORMWATER DRAINAGE OUTLET CHANNEL LONGITUDINAL SECTION - SHEET 1 OF 2
- 104000/306 Rev B STORMWATER DRAINAGE OUTLET CHANNEL LONGITUDINAL SECTION - SHEET 2 OF 2
- 104000/307 Rev B DRAINAGE CHANNEL CROSS SECTIONS - SHEET 1 OF 5
- 104000/308 Rev B DRAINAGE CHANNEL CROSS SECTIONS - SHEET 2 OF 5
- 104000/309 Rev B DRAINAGE CHANNEL CROSS SECTIONS - SHEET 3 OF 5
- 104000/310 Rev B DRAINAGE CHANNEL CROSS SECTIONS - SHEET 4 OF 5
- 104000/311 Rev B DRAINAGE CHANNEL CROSS SECTIONS - SHEET 5 OF 5
- 104000/312 Rev B STORMWATER DRAINAGE MISCELLANEOUS DETAILS

SEWER

- 104000/401 Rev B C.E.D. SEWER LAYOUT PLAN
- 104000/402 Rev B C.E.D SEWER LINE 2 - LONGITUDINAL SECTION
- 104000/403 Rev B C.E.D SEWER LINE 20 - LONGITUDINAL SECTION
- 104000/404 Rev A C.E.D SEWER DETAILS

ELECTRICAL RETICULATION

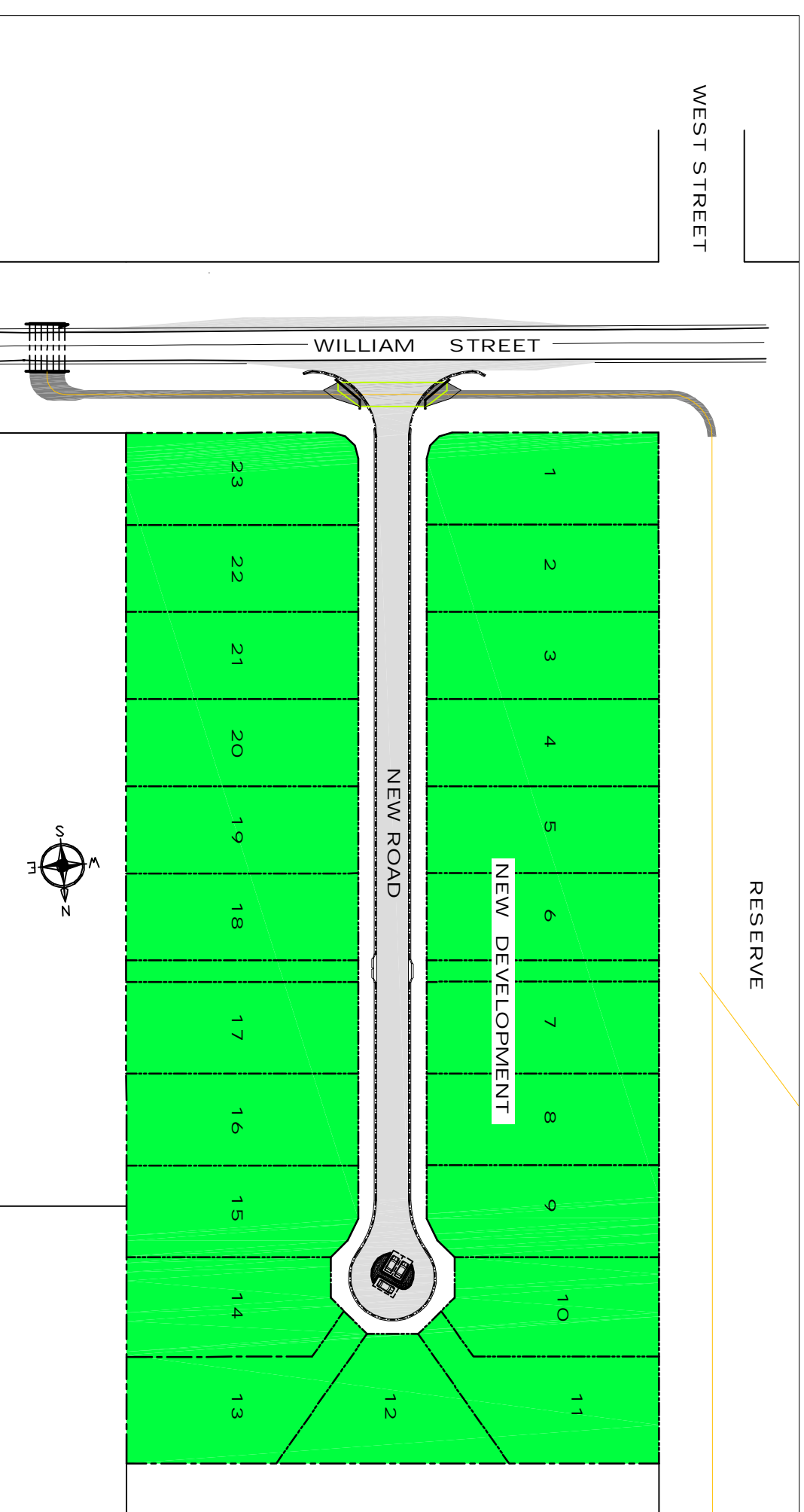
- 104000/501 Rev B ELECTRICAL LAYOUT PLAN

WATER RETICULATION

- 104000/601 Rev B WATER RETICULATION LAYOUT PLAN
- 104000/602 Rev B WATER RETICULATION CUL-DE-SAC HEAD LAYOUT AND DETAILS
- 104000/603 Rev B WATER RETICULATION DETAILS

ENVIRONMENTAL

- 104000/701 Rev B ENVIRONMENTAL LAYOUT PLAN
- 104000/702 Rev B SEDIMENT AND EROSION CONTROL DETAILS



FOR CONSTRUCTION

BAKER ROSSOW
CONSULTING ENGINEERS

136 HERRIES STREET
PO BOX 1382
TOOWOOMBA
QLD 4350
PH.: 07 4638 5655
FAX.: 07 4638 3558
EMAIL: mail@bakerrossow.com.au

QUALITY ASSURED SUPPLIER
QUEENSLAND GOVERNMENT