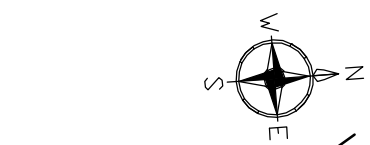


Point	EASTING	NORTHING	RL
37	387147.084	6934513.291	459.889
38	387147.120	6934513.280	459.889
39	387146.978	6934517.283	459.877
40	387146.831	6934519.252	459.886
41	387146.091	6934521.177	459.895
42	387144.455	6934523.039	459.904
43	387143.927	6934524.820	459.914
44	387143.927	6934525.690	459.918
45	387142.720	6934528.404	459.932
46	387142.395	6934530.574	459.942
47	387142.477	6934532.369	459.951
48	387142.863	6934534.305	459.960
49	387143.832	6934536.703	459.969
50	387144.049	6934537.888	459.979
51	387144.306	6934539.100	459.985
52	387144.306	6934539.958	459.989
53	387150.215	6934540.548	460.007
54	387152.202	6934540.741	460.016
55	387152.853	6934540.716	460.019
56	387154.187	6934544.026	460.013
57	387156.087	6934539.912	460.003
58	387157.822	6934537.604	459.985
59	387159.320	6934536.008	459.975
60	387160.518	6934534.201	459.968
61	387161.397	6934532.259	459.957
62	387161.891	6934530.283	459.948
63	387161.243	6934528.297	459.938
64	387160.343	6934526.437	459.928
65	387159.518	6934524.480	459.918
66	387158.448	6934522.320	459.901
67	387157.350	6934519.779	459.892
68	387156.422	6934517.925	459.883
69	387155.673	6934516.007	459.873
70	387155.111	6934514.042	459.864
71	387154.741	6934512.565	459.858
72	387154.805	6934512.748	459.858
73	387154.812	6934512.565	459.861
74	387150.812	6934514.580	459.971
75	387150.956	6934516.853	459.981
76	387151.101	6934518.930	459.991
77	387151.246	6934520.858	460.000
78	387151.358	6934522.634	460.010
79	387151.458	6934524.259	460.020
80	387151.890	6934526.829	460.030
81	387151.824	6934528.524	460.040
82	387151.969	6934530.518	460.050
83	387152.114	6934532.513	460.060
84	387152.258	6934534.508	460.069
85	387152.403	6934536.503	460.079
86	387152.549	6934538.497	460.089
87			

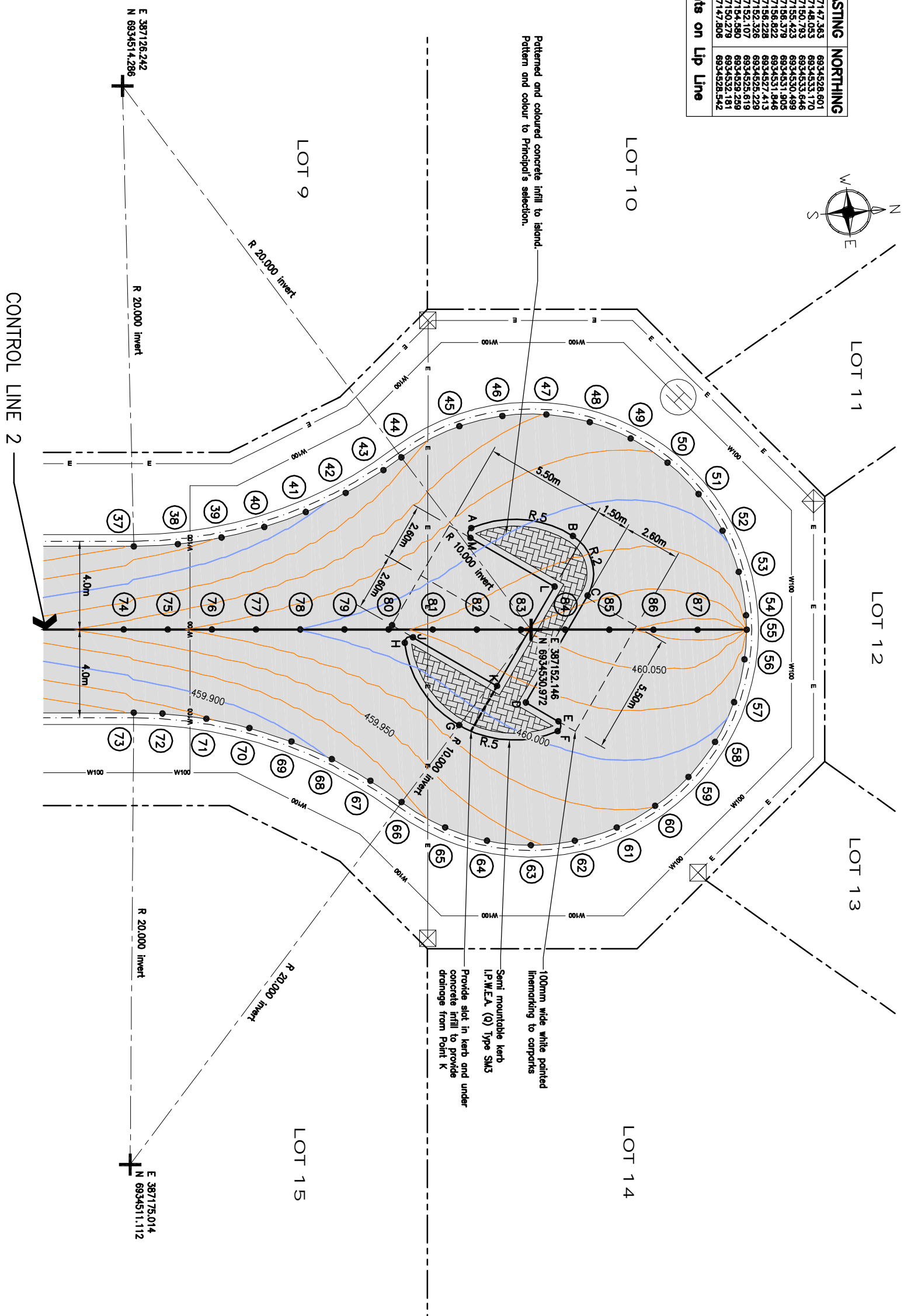
Point	EASTING	NORTHING
A	387147.363	6934528.601
B	387147.083	6934530.970
C	387150.783	6934533.646
D	387156.423	6934530.489
E	387156.822	6934531.905
F	387156.822	6934527.413
G	387152.326	6934525.229
H	387152.107	6934525.619
J	387154.580	6934529.259
K	387150.279	6934532.181
L	387147.808	6934528.542

All Points on Lip Line



**LEGEND**

W100	NEW #100 WATER MAIN
W150	NEW #150 WATER MAIN
W	EXISTING WATER MAIN
SEW	NEW SEWER GRANTY MAIN
S	EXISTING SEWER MAIN
R	NEW ROOFWATER DRAINAGE
R	EXISTING ROOFWATER DRAINAGE
SWO	NEW STORMWATER DRAINAGE
O	EXISTING STORMWATER DRAINAGE
E	NEW ELECTRICAL
- KA	KERB ADAPTOR



# INTERSECTION PLAN

Scale - F

Revisions

No.	Date	Description
A	May 08	Original issue
B	Aug 08	For Construction

**BAKER ROSSOW**  
CONSULTING ENGINEERS

136 HERRES STREET  
PO BOX 1382  
TOOWOOMBA  
QLD 4350  
PH.: 07 4638 5655  
FAX.: 07 4638 3558  
EMAIL: [mail@bakerrossow.com.au](mailto:mail@bakerrossow.com.au)

client	STYLCO PTY LTD
project	WILLIAM STREET, CAMBOOYA
title	CUL-DE-SAC DETAILS

Survey	Drawn	Design	J/M	Examined	Certified
HS	CMO	CMO	ECA	/	/
AUG 06	MAR 08	MAR 08	MAR 08		

DISCREPANCIES

WHERE ANY DISCREPANCY EXISTS BETWEEN FIGURED AND SCALED DIMENSIONS, THE FIGURED DIMENSIONS SHALL APPLY.

COPYRIGHT

THE CONTRACTOR SHALL VERIFY ALL DIMENSIONS, LOCATIONS AND DEPTHS OF ALL WORK BEFORE COMMENCING ANY WORK ON SITE. IF ANY DOUBT EXISTS THE CONTRACTOR SHALL NOTIFY THE ENGINEER IMMEDIATELY BEFORE PROCEEDING WITH ANY WORK.

JOB No. 104000

Plan No. 205